


BUNGALOW[®]

Select  *by E-Z UP*

10'x10'

OWNER'S MANUAL

World's Fastest Shelters

ORIGINAL



THANK YOU...

for your purchase of the Bungalow Select by E-Z UP®. For over 20 years, E-Z UP® customers have been thrilled with their E-Z UP® experience.

To ensure your complete

satisfaction, take the time to learn how to operate your

Bungalow Select® by carefully reviewing these set-up and care instructions.



TABLE OF CONTENTS

Intro	2
Set-up Instructions	3
Care and Maintenance	7
Important Information	7
Take Down Instructions	8
Accessories	10
Warranty and Registration	11

INSTRUCTIONS

Please read each step before you attempt to set up. Save these instructions for future reference.

NOTE - First time top and frame attachment is required

Top and frames are shipped separately to avoid damage. Once top is permanently attached to frame, set up and take down can be easily accomplished within minutes.

STEP 1

Place your Bungalow Select by E-Z UP® frame in the center of area to be shaded. With partner on opposite side, grasp outer legs, slightly lift off the ground and step backwards, stopping at full arms' length - approximately 3/4 its total size.

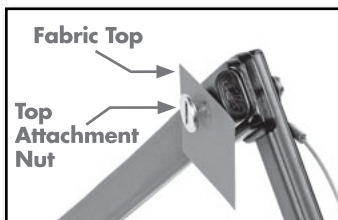


Gently unfold the fabric top and place it over the open frame. Align the four corners of the top over the four corners of the frame.



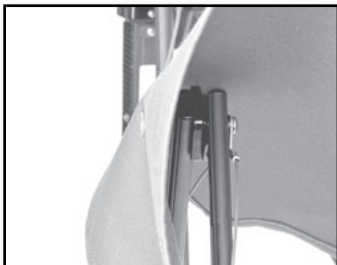
STEP 3

To secure the top to frame, align grommet holes on valance with the bolts in frame.



STEP 4

Unscrew top attachment nut from bolt. Place grommeted fabric top over the bolt, install top attachment nut and tighten until snug. Top should rotate easily - **Do not over tighten.** Repeat on remaining grommets.



STEP 5

Be careful not to pinch fingers.



Engage the Auto Slider® at each corner by pushing up on trusses while holding down the top of the leg with other hand. The quick pin will engage the hole.



STEP 7

Use peak extension pole to push up center hub, extending top frame structure. Continue push up motion until all four sides snap in place.

WARNING: Do not let go of center hub until at least two sides are locked. Complete top structure must be locked before using shelter.



STEP 8

Secure the top to the frame by pulling the hem down and matching Quick Attachment Straps on the top with the Quick Attachment Straps on the frame. Push the straps firmly together at each corner. Repeat at all four corners.



STEP 9

Secure all inner peak tubes with quick release pins.



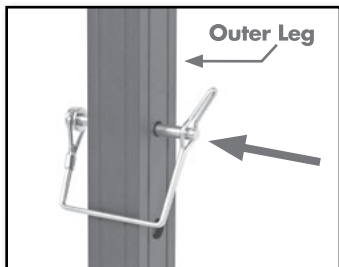
STEP 10

Lift up two adjacent outer legs and slide out the inner legs until snap button locks. Repeat on opposite legs. Be sure to adjust two legs at one time to avoid frame damage.



STEP 11

Once the shelter is fully raised to the desired height setting, secure all legs with quick release pins.



NOTE: Once top is permanently attached, only perform STEPS 1 and 5 - 11 to set up.

CARE & MAINTENANCE

For long lasting durability and the best possible protection for your Bungalow Select® shelter, follow these care and maintenance instructions:

- The Bungalow Select® top clean-up is a breeze. Spot wash by sponging briskly with a soapy solution of natural soap in lukewarm water. Rinse thoroughly with clean water to remove soap and air dry. For stubborn stains, use a fabric spot remover. Follow directions on container. Rinse thoroughly with clean water and air dry.
- Let the top and frame dry completely before closing or storing to avoid mildew.
- Frame will operate and look better if occasionally wiped with silicone spray, especially before and after use in damp conditions. Remove excess silicone residue before applying top.
- Use a seam sealer if top leaks or drips water. Available at most hardware or sporting goods stores.
- Slightly tighten bolts if frame becomes loose.

IMPORTANT INFORMATION

IMPORTANT: Read this information before proceeding. It is the user's responsibility to take the following precautions at all times.

- Use caution when handling the Bungalow Select® folding frame.
- Avoid pinching hands or fingers as frame opens or closes.
- **Always stake or weight down your shelter.** Do not use in any potentially windy or rainy weather. Wind, rain and snow can damage the shelter and may also result in injury to you or others. Therefore, do not rely on shelter for protection in heavy or prolonged weather storms.
- Do not use shelter in a lightning storm.
- The Bungalow Select® is designed as a seasonal shelter.
- Keep all flame and heat sources away from fabric top. Do not build fires within shelter enclosure.

STEP 1

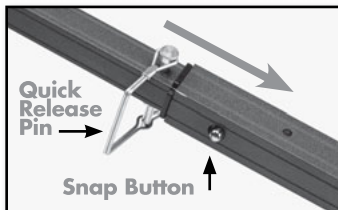
With partner, disengage quick release pins. Depress snap button on legs and telescope inner legs into outer legs. Repeat on other legs, making sure to do two legs at a time.



STEP 2

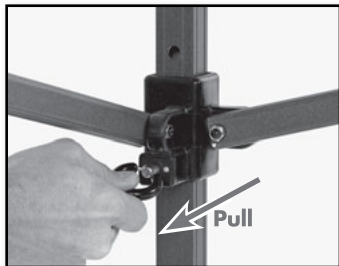
Stand under shelter and locate center hub. Disengage quick release pins. While holding center peak pole, release top frame inner peak beams by pushing snap buttons one at a time on all top frame inner peak beams to disengage.

WARNING: After all peak beam assembly snap buttons are released GENTLY lower center hub. Center hub should drop down in an inverted position and rest near the ground.



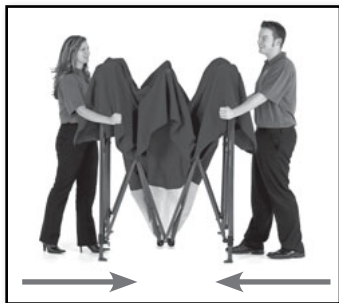
STEP 3

Release Auto Slider® at each corner by first lifting hem of top. With one hand, push up on truss near slider, release quick pin by pulling ring.



STEP 4

With one or two partners at opposite sides of shelter make sure peak beam assembly snap buttons are disengaged. Lift shelter up slightly and shake while stepping toward one another until shelter is fully closed. Be careful not to pinch fingers. Store shelter in cover bag.



NOTES

[illegible]

ACCESSORIES



SUN SCREEN



SCREEN ROOM



DELUXE STAKE KITS



For long lasting durability and the best possible protection.

INTERNATIONAL E-Z UP, INC., manufacturer of the Bungalow Select®, warrants to the original purchaser who provides a dated sales receipt from an Authorized Dealer, each part of the Bungalow Select® frame and top to be free from defects in material or workmanship for a period of five years after the date of original purchase. This warranty applies only for normal and expected uses, as determined by the manufacturer.

INTERNATIONAL E-Z UP, INC.'s obligation and liability under this warranty is limited to the repair or replacement (at its option) of the product or its parts, after its own review and examination.

RETURN ADVISORY - Before returning any part or product to INTERNATIONAL E-Z UP, INC. or its designated representative, please phone or write to obtain specific return shipping instructions. All shipping costs must be prepaid, and INTERNATIONAL E-Z UP, INC. is not responsible for products damaged in transit.

CONDITIONS - This warranty shall be void as to any product which has been altered or modified in any manner. This warranty does not apply to damages caused by wind, rain, or other forces of nature, not to accidental or deliberated damage of the product, nor to use of the product that does not conform with the product instructions. This warranty is provided in lieu of all other warranties, expressed or implied.

CUSTOMER SERVICE

1-888-474-3583

bungalowbyezup.com

© Copyright 2013 International E-Z UP, Inc. USA. All rights reserved.
OM_BSL_1010_0423



INTERNATIONAL E-Z UP, INC.

Worldwide Corporate Headquarters
1900 Second Street
Norco, California 92860 USA

888.474.3583

bungalowbyezup.com