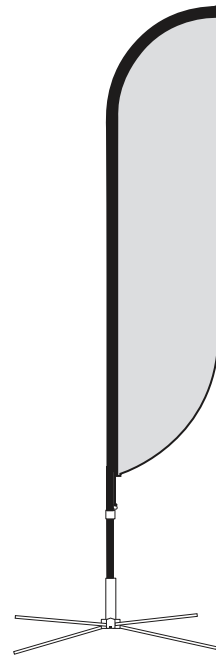




PROFLAG™

INSTRUCTION SHEET

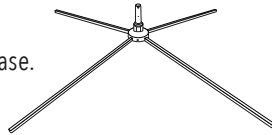
(1) ProFlag™ Composite Pole Set with Carry Bag,
(1) ProFlag™ Flag Fabric and Your Choice of Base or Ground Stake



BASE / STAKE ASSEMBLY

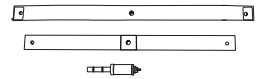
FOLDING BASE

Open and set base on ground at desired location. Place the flag pole onto Folding Base.



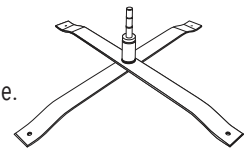
DELUXE CROSS BASE

Align the two bars in an X shape, the grooved bar goes on the bottom.



Align the metal base in the center and tighten the nut underneath.

Place the flag pole onto Deluxe Cross Base.



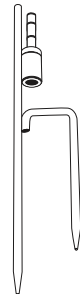
GROUND STAKE

Hammer stake into ground. Place the flag pole onto the Ground Stake.



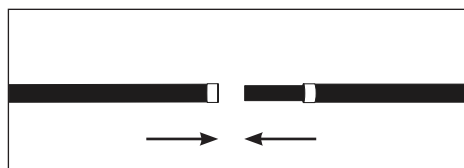
DELUXE GROUND STAKE

Hammer stake into ground. Place flag pole onto Deluxe Ground Stake.



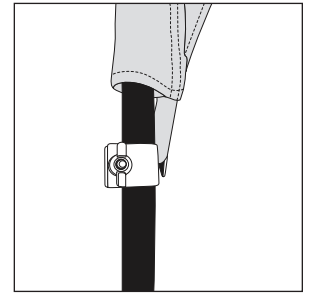
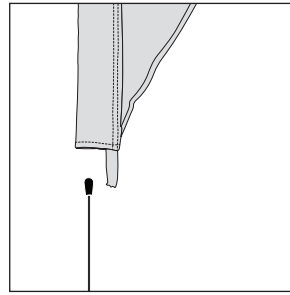
POLE ASSEMBLY

- Step 1.** Remove pole segments from the carry bag.
- Step 2.** Assemble the flag pole, starting with the base pole. Connect smaller diameter sections with each other.
- Step 3.** Verify that all sections are completely connected to ensure a proper flag fit.



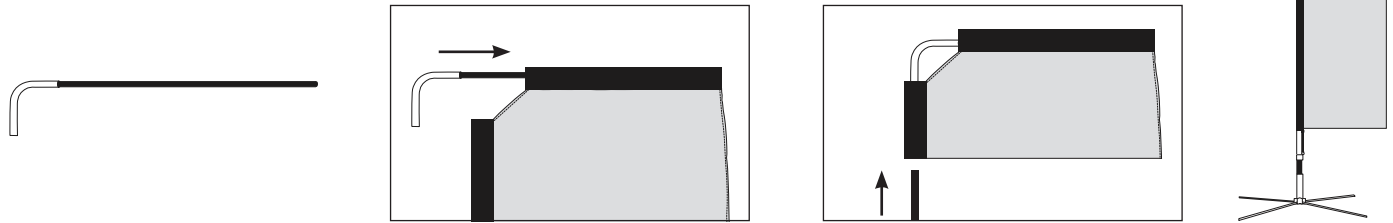
FLAG ASSEMBLY

- Step 1.** Insert top of the pole into the bottom of the flag fabric pocket.
- Step 2.** Carefully work fabric down until end of pole completely reaches end of the flag fabric pole pocket. This will ensure best and proper flag fit on pole. **Note:** Working the fabric down slowly makes it easier to slip flag fabric completely through.
- Step 3.** Pull the fabric taut to achieve the curvature of the fabric design. Attach rope to flag tension adjuster.
- Step 4.** Adjust the flag to the desired tension. Do not over-tighten the bolt.



FOR RECTANGLE FLAGS ONLY

- Step 1.** Insert top of the pole into the bottom of the flag fabric pocket.
- Step 2.** Carefully work fabric down until end of pole completely reaches end of the flag fabric pole pocket. This will ensure best and proper flag fit on pole. Working the fabric down slowly makes it easier to slip flag fabric completely through.
- Step 3.** Insert the right-angle pole into the top of the flag fabric pocket. **Note:** You will be using this pole instead of the thinnest pole.
- Step 4.** Join the two poles by inserting the angled portion of the arm assembly pole into the top of the flag pole. (Smaller diameter sections insert into one another.)
- Step 5.** Pull the fabric taut. Attach rope to flag tension adjuster.
- Step 6.** Adjust the flag to the desired tension. Do not over-tighten the bolt.



CARE AND MAINTENANCE

For long lasting durability and the best possible protection for your E-Z UP® ProFlag™, follow these E-Z care and maintenance instructions:

- Use a mild soap (not detergent) and plenty of water for the cleaning.
- Let the product dry completely before closing or storing to avoid mildew.

REPLACEMENT PARTS

800-45-SHADE ezup.com/parts

WARRANTY INFORMATION

www.ezup.com/warranties

CONDITIONS

This warranty shall be void as to any product that has been altered or modified in any manner. This warranty does not apply to damages caused by wind, rain, or other forces of nature, not to accidental or deliberate damage of the product, nor to the use of the product that does not conform with the product instructions. This warranty is provided in lieu of all other warranties, expressed or implied.

WARNING: Do not set up within 30 feet of power lines. Do not use during electrical storms or high winds. Keep all flame and heat sources away from fabrics and accessories. These fabrics meet the flammability requirements of CPAI-84. The fabric may burn if left in continuous contact with any flame source. The application of any foreign substance to the fabric may render the flame-resistant properties ineffective.