



Ambassador™



Available Size:
10' X 10'

PORTABILITY AND PROTECTION

The Ambassador™ recreational shelter is lightweight and portable for protection against the elements.

This 10' x 10' shelter is built with the newest in technology and materials, making it a reliable and durable option for protection against heat stress, a hydration station, jobsite information center, first-aid tent, and more.

The shelter has a clear-span center for increased headroom, high-strength end caps, improved Auto-Slider® Pull Pin quick lock release, three height options, and reinforced fabric corners. The shelter comes with an upgraded roller bag and spike kit.

With a UV- and water-resistant canopy, the shelter is OSHA compliant and meets the CPAI-84 and NFPA-701 fire-resistance codes.

The Ambassador shelter is an instant solution for providing a defense to the heat, sun, wind and rain.



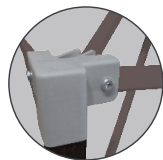
SETS UP AS E-Z AS 1, 2, 3...



Gray
(Black Frame)

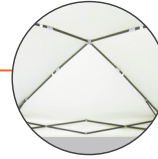


White
(Gray Frame)



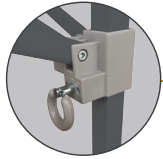
HIGH-STRENGTH END CAPS

Heavy-duty end caps for greater durability



CLEAR-SPAN CENTER

Provides increased headroom



AUTO-SLIDER® PULL PIN

Improved Auto-Slider® Pull Pin for quick lock release



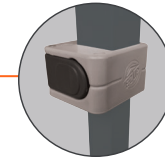
E-Z GLIDE TRUSS WASHERS

Provides increased stability and E-Z set up



REINFORCED FABRIC TOP CORNERS

Greater durability and longer lasting



TOGGLE LEG ADJUSTMENT

Adjustable legs with 3 height options

FEATURES & SPECIFICATIONS

SIZE	10'x10' (3.0 m x 3.0 m)
SHADED AREA	100 sq. ft (9 sq. m)
FRAME	Powder-Coated Steel
TOP FABRIC	Recreational Grade Fabric
PRODUCT INCLUDES	Fabric Top, Folding Frame, Roller Bag and Spike Kit
ITEM WEIGHT	35 lbs. (15.9 kg)
BOX DIMENSIONS	51" L x 8.25" W x 7.5" H (129 cm x 21 cm x 19 cm)
SHIPPING WEIGHT	39 lbs. (17.7 kg)
MAXIMUM PEAK HEIGHT	113" (2.8 m)
MAXIMUM HEADROOM	118" (2.9 m)
MAXIMUM VALANCE CLEARANCE HEIGHT	78" (1.9 m)
CUSTOM PRINTING	N/A
WARRANTY	1 Year

RECOMMENDED USES

- Construction
- Trades
- Emergency Response and First Aid
- Agriculture and Landscaping
- Utility and Survey Crews
- Equipment Protection
- Roadside Safety
- Disaster Relief Services
- Command Post
- Oil/Gas Refining

INSTANT SHELTER® ACCESSORIES



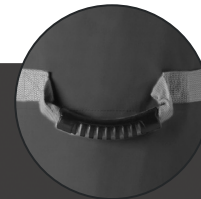
Weight Bags



Heavy-Duty Stake Kit



Event Light



RUBBERIZED SURE-GRIP HANDLES

New handle design makes it E-Z to roll your bag in comfort



E-Z GRAB ZIPPER PULL

Heavy-duty zipper and stylish zipper pull for E-Z open



HD WHEELS

High-density 1-piece wheels with wider axle for increased stability



International E-Z UP, Inc.
 1900 Second Street
 Norco, California 92860
 (951) 279-0999 • FAX (800) 810-8775

TO ORDER:
(800) 45-SHADE
 (800) 457-4233